



**YOUNGSTOWN
STATE
UNIVERSITY**

**BOARD OF TRUSTEES
WORKFORCE EDUCATION AND INNOVATION COMMITTEE**

**Charles T. George, Chair
Laura A. Lyden, Vice Chair
All Trustees are Members**

**Wednesday, March 1, 2023
3:00 p.m. or immediately following
previous meeting**

**Board Room
Tod Hall**

AGENDA

A. Disposition of Minutes

B. Old Business

C. Committee Item

1. Workforce Education and Innovation Discussion Items

C.1.a. = Tab 1

a. Division of Workforce Education and Innovation Overview

This overview of the division will touch base on the organizational structure; financial standpoint; key projects; and metrics for the area.

Jennifer Oddo, Vice President Division of Workforce Education and Innovation, will report.

b. Conceptual Framework Linking to Careers and Degrees

Jennifer Oddo, Vice President Division of Workforce Education and Innovation, will report.

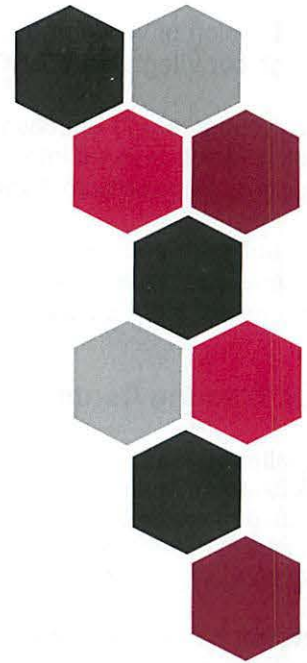
D. New Business

E. Adjournment



Youngstown State University
**Division of Workforce
Education & Innovation**

Division of Workforce Education and Innovation
Report to Board of Trustees
March 1, 2023



Agenda Items

- Organizational Overview
- Financial Overview
- Key Project Updates
- KPI's

ORGANIZATIONAL OVERVIEW

The Division of Workforce Education and Innovation aligns **W**orkforce, **E**ducation, **R**esearch and **C**ommercialization through our integrated **WERC@YSU** approach to developing in-demand industry skills.

Our workforce and education programs serve YSU students, K-12, companies and community members looking to upskill, reskill or enter into new career pathways. We engage our learners through the online YSU Skills Accelerator and through classroom, hybrid and experiential learning at any one of our training centers.

Through partnerships with the YSU Research Foundation (YSURF) and Small Business Development Center (SBDC), students can participate in our integrated research and commercialization initiatives, supported through industry and government led projects.

Our Training Centers

Excellence Training Center (ETC) at Kohli Hall: This 54,000 state-of-the-art advanced manufacturing technology center is located on Main Campus and is equipped with over \$15M of advanced manufacturing and research equipment. From additive manufacturing to industrial electronics and leading the way in advanced robotics, the ETC serves students and industry in developing in-demand capabilities.

Jackie Ruller, Director

National EV Training and Innovation Center: This national center, to be located in Lordstown, OH, is under development with Foxconn with support from General Motors and Ultium Cells. The first of its kind this center will focus on advancing workforce, education, research and commercialization for EV's. This center will serve industry, academia and workforce leaders across the country in helping to advance emerging skills and innovation.

Jennifer Odde, Interim

IT Workforce Accelerator at Silvestri Hall: Established through industry partnerships with IBM, WIA, Cisco and others, the IT Workforce Accelerator now delivers in-demand IT skills training around software development, cybersecurity, cloud, artificial intelligence, networking and telecommunications.

Lindsey Ekstrand, Director

The Data Mine: An on-campus learning community established in partnership with Purdue University and in collaboration with the College of STEM. YSU students, from any major, study the science of data while applying their knowledge to real world company sponsored projects.

David Janofa, Interim

Williamson Innovation Park: Located just south of campus, this 220-acre open air research park will be used by YSU students and area K-12 students to launch their STEM projects for engineering, biosciences, aviation and more! (opening July 2023)

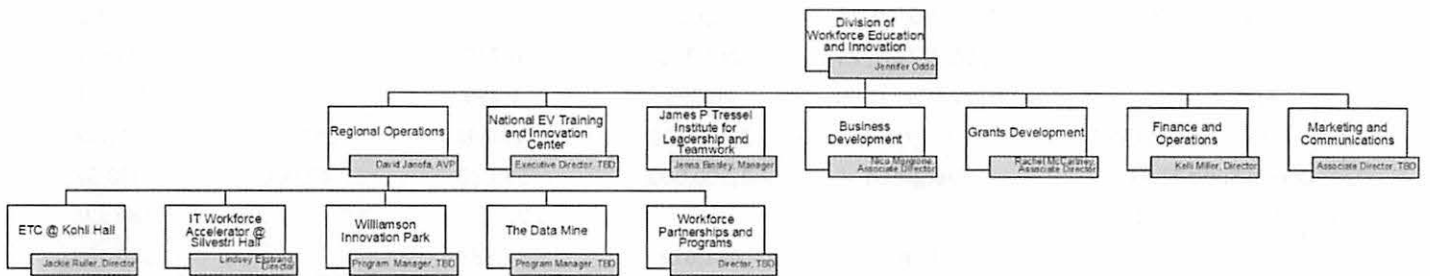
David Janofa, Interim

James P. Tressel Institute of Leadership and Teamwork: The James P. Tressel Institute for Leadership and Teamwork will empower students, community leaders, and business directors to make a meaningful difference wherever their paths take them. The institute will provide courses, workshops, guest speakers, and more to prepare students and participants to become strong, impactful leaders.

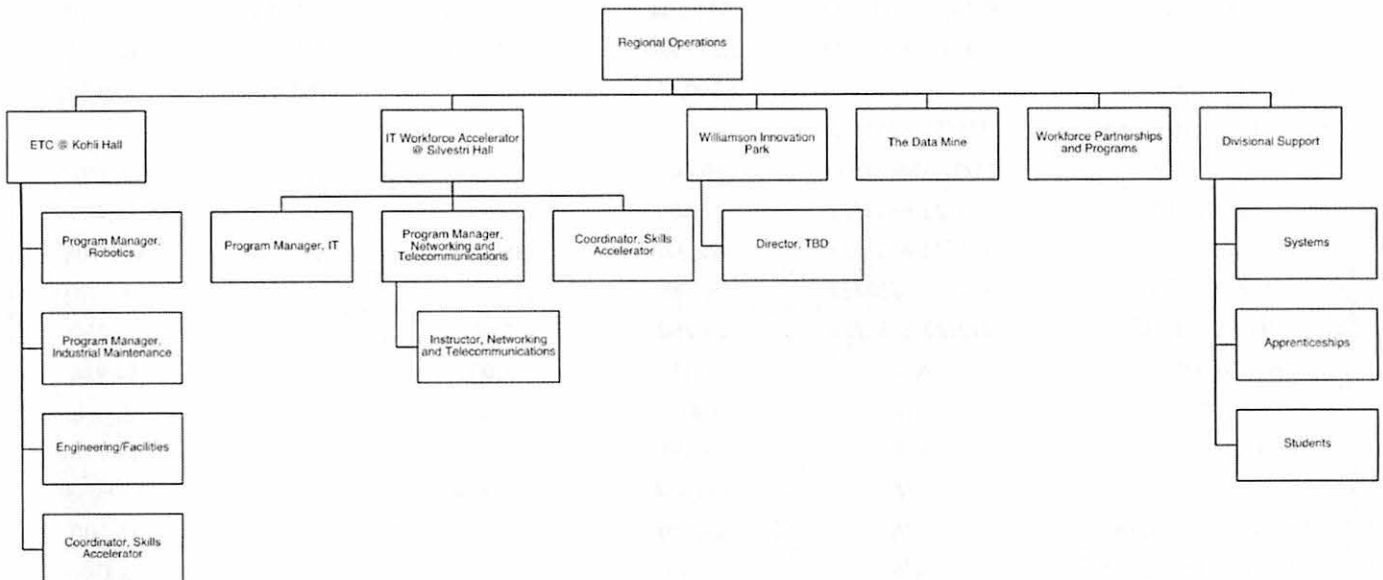
Jenna Binsley, Manager

ORGANIZATIONAL OVERVIEW

Division of Workforce Education and Innovation Organizational Chart



Division of Workforce Education and Innovation Organizational Chart

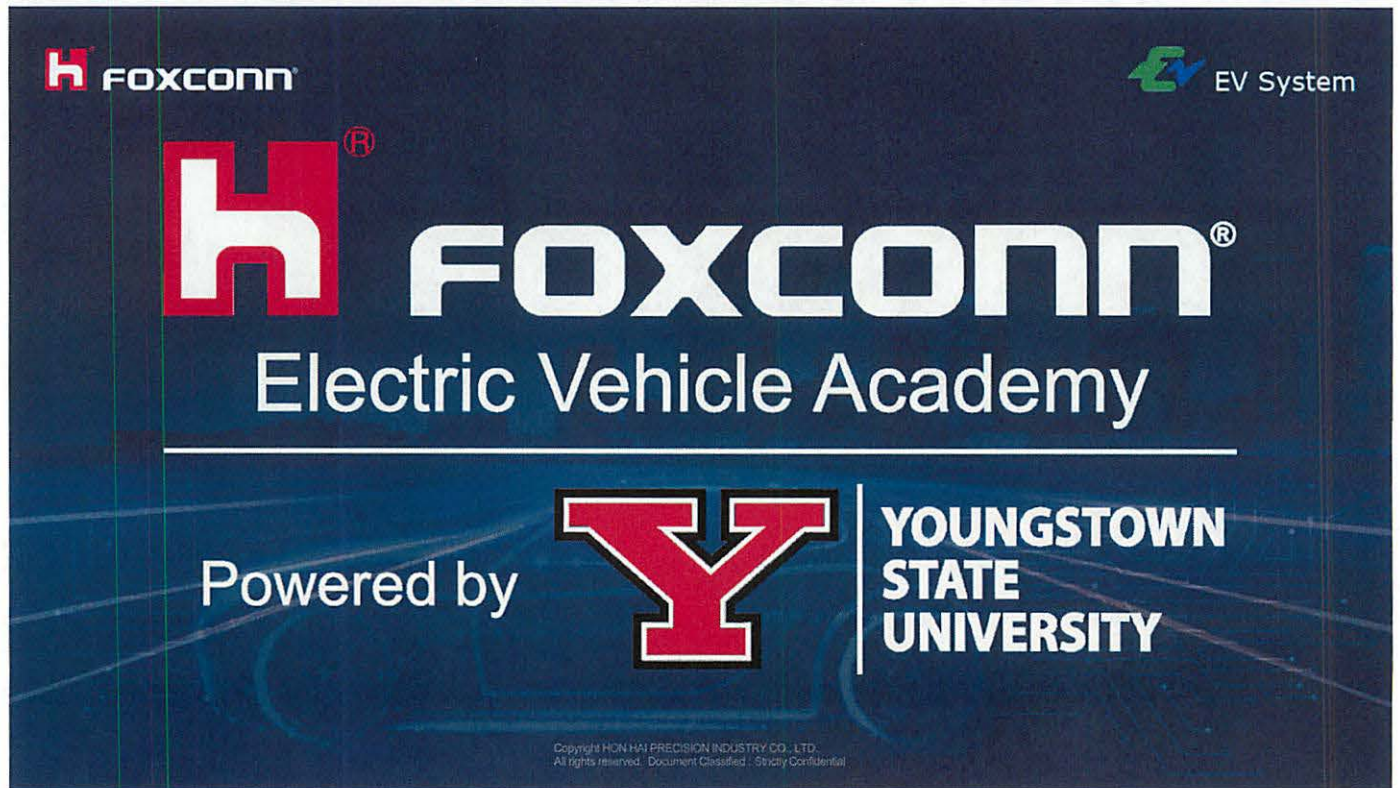


DIVISIONAL FINANCIAL REPORT

Divisional					
Account Title	PD of Performance	Adjusted Budget	Year to Date	Encumbrances	Available Balance
General	N/A	31,889	14,705	-	17,184
Continuing Ed WF	N/A	915	2,732	-	(1,817)
Grants Residual Fund		-	(227,545)	125,620	101,925
NCDMM Storefront	8/11/21-7/30/23	300,000	-	-	300,000
Ohio Pathways	3/24/22-6/30/24	100,000	-	39,588	60,412
5G Readiness	10/1/22-9/30/25	1,154,880	17,111	-	1,137,769
MV WF Partner	7/1/21-6/30/23	178,764	29,662	-	149,102
Tech Prep 23	7/1/22-6/30/23	20,000	-	-	20,000
IMAP Round 2	1/1/22-7/31/23	241,390	6,720	-	234,670
Grant Writing	1/1/22-12/31/22	20,398	1,259	-	19,139
Comm Support Fnds CWDS	Evergreen	2,328,533	1,130,980	211,755	985,798
Comm Supp-ESITC	Evergreen	1,500,000	59,680	42,000	1,398,320
Cash Match BB and 5G		-	(389,225)	-	389,225
TILT	N/A	411,622	37,333	-	374,289
YSUF Tressel St Work	N/A	107,693	4,246	-	103,447
Total Divisional		6,396,085	687,658	418,963	5,289,464
Excellence Training Center					
Account Title	PD of Performance	Adjusted Budget	Year to Date	Encumbrances	Available Balance
General	N/A	52,276	-	-	52,276
Continuing Ed ETC	N/A	376,191	23,144	8,563	344,485
Hybrid Mfg	8/26/21-9/30/23	541,194	102,494	58,415	380,284
DLA 4.0	4/1/22-09/30/24	3,172,868	1,058,962	465,045	1,648,861
DLA 4.0 + Option A		2,590,455	-	160,915	2,429,540
MVICCETC State Funds	7/1/19-6/30/22	-	-	-	-
TechCred 7	11/1/20-9/30/22	10,646	7,238	1,032	2,376
Tech Cred 8	6/3/21-6/30/22	11,485	-	-	11,485
MVICC FY 22 23	7/1/21-6/30/23	922,228	363,606	66,914	491,708
Tech Cred 9	8/6/21-8/30/22	8,100	-	-	8,100
Tech Cred 13	2/2/22-5/31/23	27,250	1,000	-	26,250
TechCred Rd 15	N/A	15,936	1,000	-	14,936
MVICC Ops	N/A	1,820	36	-	1,784
Ed Youth Camps	N/A	27,861	1,135	-	26,726
Gifts	N/A	344,484	13,824	-	330,659
YSUF Roth End Gifts	N/A	16,200	-	-	16,200
YSUF Humtown	N/A	3,175	-	-	3,175
RAPIDS 5		540,833	-	220,182	320,651
Rapids 6		316,834	-	-	316,834
Total ETC		8,979,836	1,572,440	981,066	6,426,331
Total Consolidated		15,375,921	2,260,097	1,400,029	11,715,795

KEY PROJECT UPDATES

Project: Foxconn EV Academy powered by YSU



Project Overview

The EV Academy will serve as a National Hub to help the emerging electric vehicle industry build and scale a sustainable workforce around advanced manufacturing, energy storage and other integrated technology solutions, such as artificial intelligence, 5G and cybersecurity. The goal is to bring together industry, academia and government under a connected open source approach to share resources, best practices and programs to serve the workforce needs with greater agility.

Phase 1:

- 2 buildings totaling 25,000 square feet
- Foxconn owns the buildings, YSU will operate within the buildings
- YSU will own and operate the digital footprint
- Initial Skill focus: Electrical/Electronics, Electric Charging, Industrial Maintenance, Robotics, Automation, Other TBD
- GM/Ultium support leveraging GM Community Investment for training and innovation center
- Formal MOU in process

Phase 2:

- Expansion to meet demands of Foxconn, Ultium and ecosystem needs.

Activities:

- Faculty Roundtables with Foxconn engineering teams
- Divisional meetings with Foxconn leaders to assess skills needs
- EV Conference in planning phases for late Summer 2023.

H FOXCONN Building Two – Option One



Project: Silvestri Modernization



Project Overview:

Divisional Offices, the IT Workforce Accelerator Training Center and the Tressel Institute for Leadership and Teamwork will be moving in a phased approach to Silvestri Hall. Full move to be completed by start of Fall Semester 2023. Funding, totaling \$225k for renovations, provided by the division leveraging proceeds from external initiatives.

Project will expand capacity to 6+ training rooms, convening space for 50+ participants and more connected access to YSU Students and the community. Additionally, the IT Workforce Accelerator will have an increased focus on developing a center for information technology workforce training programs.

Programs under development:

- Computer Programming Fundamentals
- Networking and Telecommunications
- Agile and Design Thinking
- Big Data

Project: Penguin Shark Tank



PENGUIN SHARK TANK COMPETITION

WEDNESDAY APRIL 26, 2023

YSU Williamson College of Business
Time: 5:30pm-7:30pm
Room: 1171

POWERED BY:

Project: YSU Excellence Training Center awarded \$500K grant to serve students with disabilities

Project Overview

Youngstown State University's Excellence Training Center, in collaboration with the Columbiana County Board of Developmental Disabilities and Columbiana County Educational Service Center, has been awarded a \$500,000 grant to increase the participation in and attainment of industry-recognized credentials and apprenticeships for students with disabilities.

The project through the Ohio Department of Developmental Disabilities-Pathways to Careers-Improving Post-Secondary Education Options for Students with Developmental Disabilities focuses on current high school seniors and those who graduated in the 2020, 2021 and 2022.

The initiative is designed to assist those individuals in accessing post-secondary education, training or apprenticeships.

Project: YSU Student Projects

- (1) **Google Dashboard Control** - Students are researching the narrative of the region using tools like Google, ChatGPT and Twitter tone analyzing software. The students will also develop strategies and recommendations on how we can create a more appealing digital footprint for the region.
- (2) **YSU Data Mine** – The Data Mine in collaboration with Purdue and YSU College of STEM Math Department have launched its second semester with an additional 12 students. 14 students participated in Fall 2022 and received 4 credits each. Through support of DWEL and our corporate paid sponsor NUVVE, students and faculty will be attending Purdue’s Data Mine Symposium with West Lafayette, IN, later this Spring.

The program currently has two projects:

- (1) Nuvve – Electric Charging Station Data Project
- (2) Central Insurance of Ohio – Social Media Data project

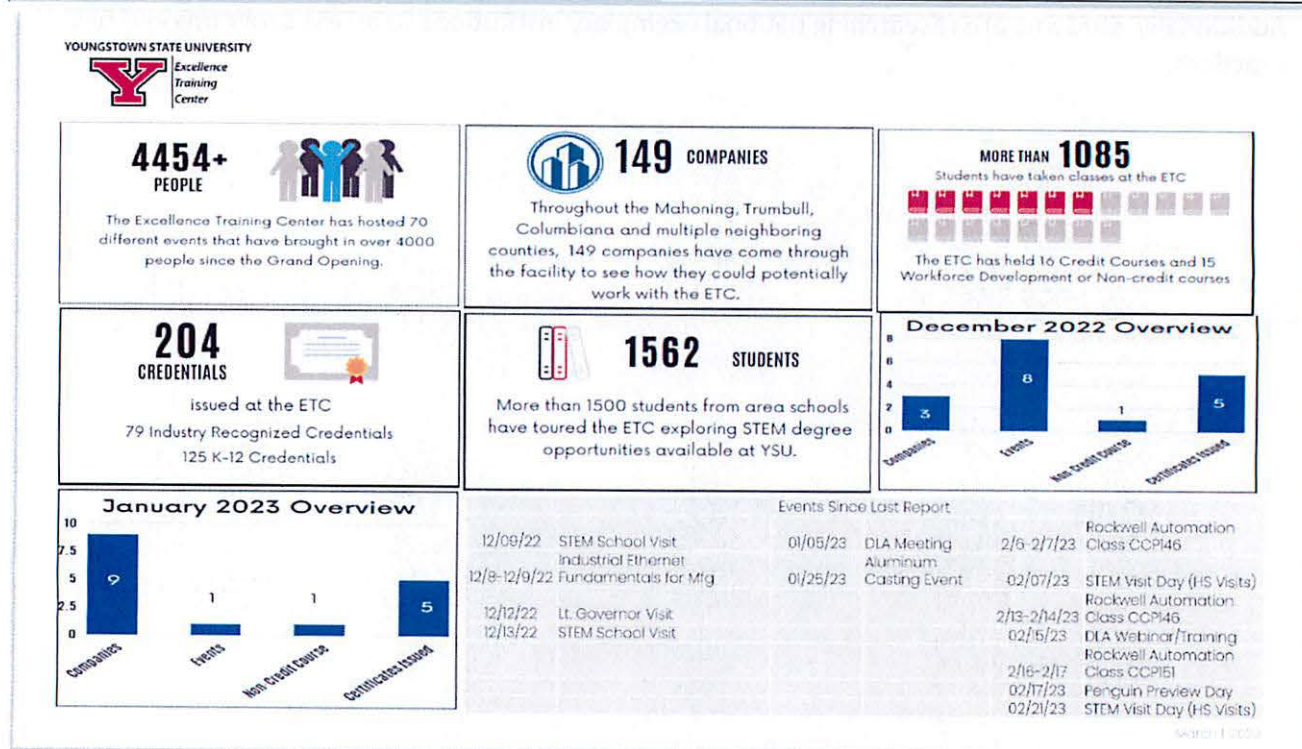
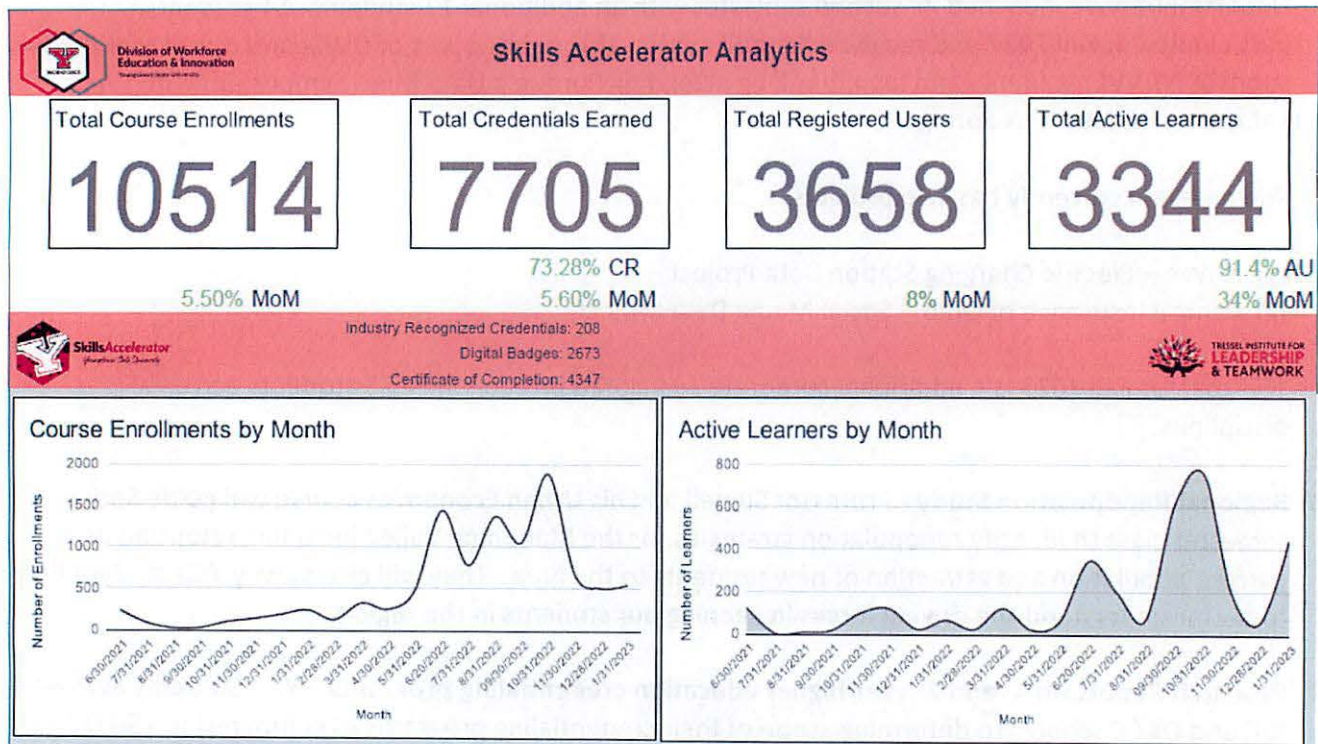
The goal for Fall 2023 is 4 additional corporate sponsored projects with 25 students across all disciplines.

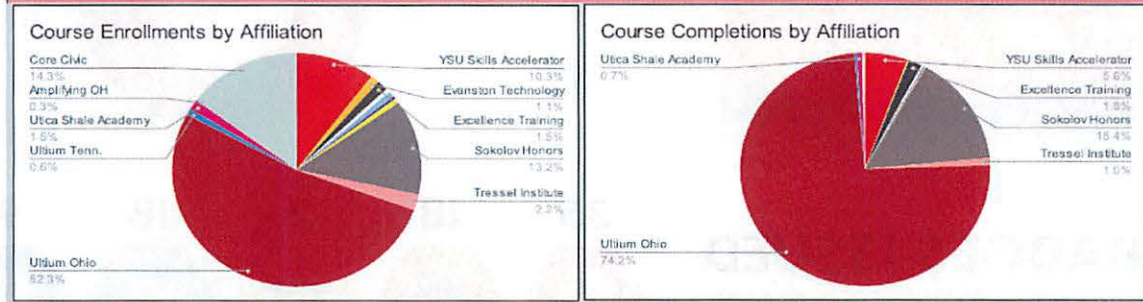
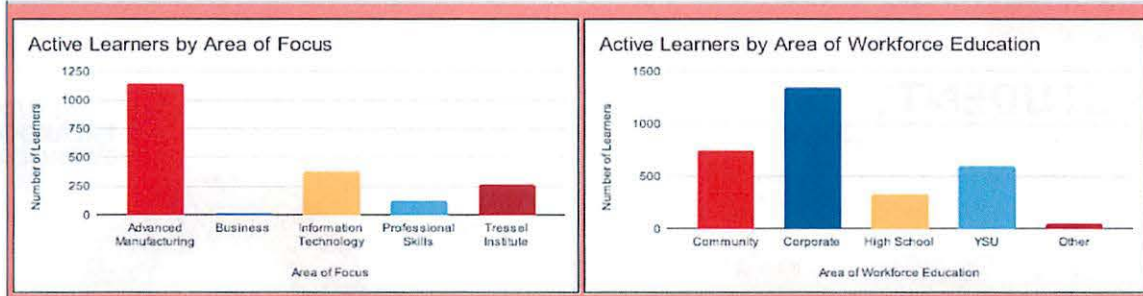
- (3) **Regional Repopulation Study** - Professor Sumell and his Urban Economics course will guide Spring semester class to identify repopulation strategies for the Mahoning Valley including retention of current population and attraction of new residents to the area. They will also survey YSU student body to better understand the driving forces in keeping our students in the region.
- (4) **Research Report on 4- and 2- year higher education credentialing programs** – YSU Students evaluating IUC and OACC schools to determine scope of their credentialing programs as compared to YSU DWEL. Additionally, students are researching national exemplary institutions to assess programs and best practices.

Key Performance Metrics

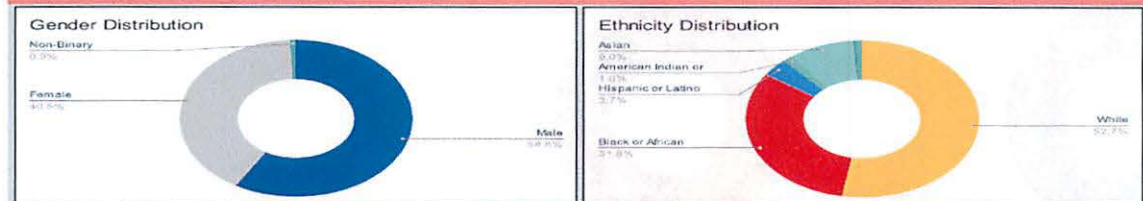
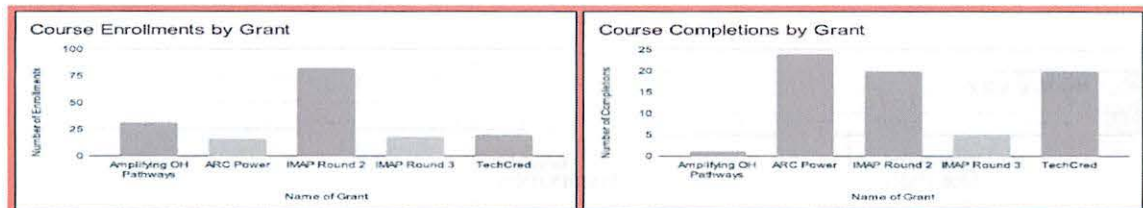
The Division is currently making changes to its systems to better collect KPI data for each training center. Expected completion of this new reporting will take effect July 1, 2023.

Divisional Enrollments – All Centers





March 1, 2023



Workforce Education Highlights

5G Readiness <div style="font-size: 2em; font-weight: bold; margin: 10px 0;">35</div> Active / 31 Credentials Earned	Amplifying Ohio's Pathways <div style="font-size: 2em; font-weight: bold; margin: 10px 0;">11</div> Active / 1 Credentials Earned	MAP <div style="font-size: 2em; font-weight: bold; margin: 10px 0;">82</div> Active / 24 IRCs Earned 2 Certification Exams Pending
--	---	---

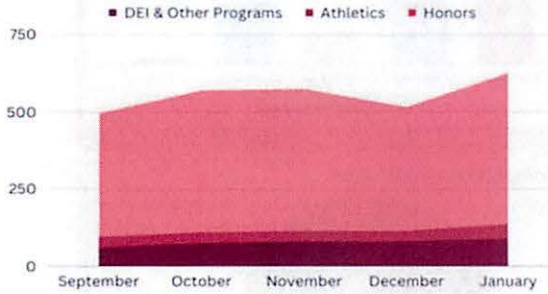
March 1, 2023



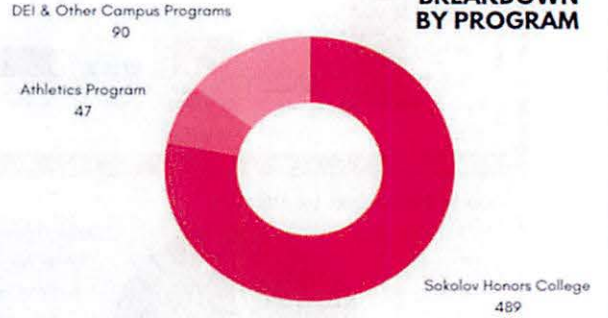
JANUARY 2023 MONTHLY REPORT

626 STUDENTS

Enrolled in the Tressel Institute Personal Leadership Badge Program



STUDENT BREAKDOWN BY PROGRAM

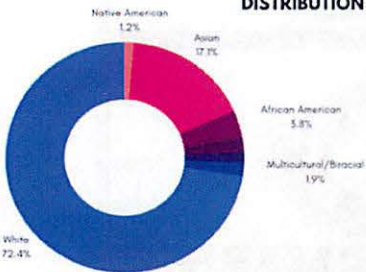


82 BADGES ISSUED

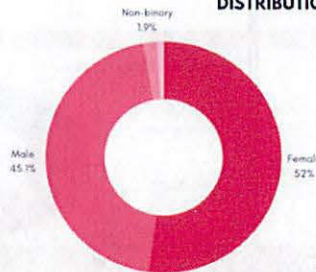


JANUARY 2023 MONTHLY REPORT

ETHNICITY DISTRIBUTION

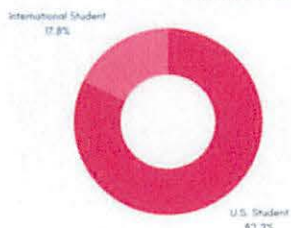


GENDER DISTRIBUTION



JANUARY 2023 MONTHLY REPORT

INTERNATIONAL STUDENT DISTRIBUTION



EMPLOYMENT DISTRIBUTION

