

AGENDA ITEM: C.2.b.4.

AGENDA TOPIC: Departmental Name Change

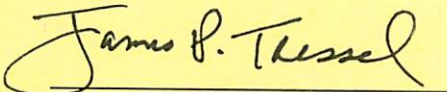
STAFF CONTACT(S): Dr. Martin A. Abraham, Interim Provost and Vice President of Academic Affairs, and Dr. Ronald K. Chordas, Executive Director of the Public Service Institute

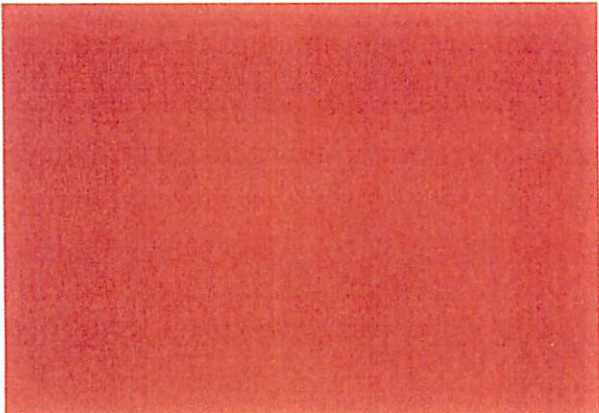

BACKGROUND: The Public Service Institute of Youngstown State University currently has two centers of expertise: the Center for Urban and Regional Studies and the Center for Human Services Development.

SUMMARY AND ANALYSIS: Both of these areas involve regional economic development. In order to better reflect the services of the department, it is requested that the name of the department be changed to the Regional Economic Development Institute.

RESOLUTION: N/A – DISCUSSION ITEM ONLY

REVIEWED AS TO FORM AND CONTENT:


James P. Tressel, President



PSI → REDI
PUBLIC SERVICE INSTITUTE RENAMED TO
REGIONAL ECONOMIC DEVELOPMENT INSTITUTE


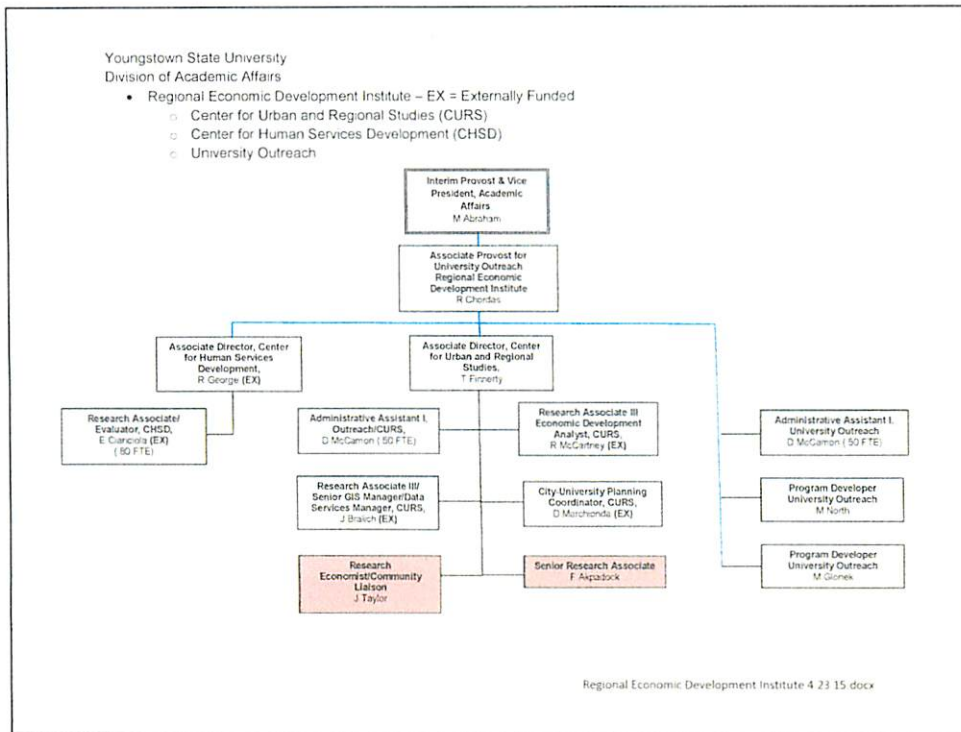
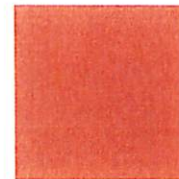


Table of Organization

- REDI – consists of the Center for Urban and Regional Studies (CURS), Center for Human Services Development, and University Outreach.
- Reorganization outcome – establish an internal structure to address and communicate consistently about community engagement and economic development activities.



Regional Economic Development Institute



- Re-align, rename and modify the Public Service Institute goals to create an internal structure to more efficiently address the economic development issues facing the University and the Mahoning Valley.

CURS MISSION



- To integrate professional staff and university resources to focus on issues and opportunities of urban and regional development through basic and applied research, technical assistance, training, economic climate and build the capacity of non-profit, educational and publicly funded organizations

The REDI units each address a component of the mission.



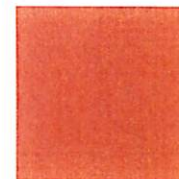
- CURS provides technical assistance, world class GIS mapping services related to community planning and issues of land use/vacant properties, and strategic planning.
- The Center for Human Services Development provides resources for educational initiatives, grant writing, community needs assessments, and program evaluation.
- University Outreach provides Continuing Education for ongoing professional development and workforce development.

REDI VISION



- REDI is a premier **University** resource available to address economic and **community development issues in the Mahoning Valley**.
- Staffed with individuals with specific identified skill sets in planning and community collaboration.
- Strong **interdisciplinary collaboration** across the university through regular engagement.
- REDI can serve as a catalyst for positive **economic development, innovation and community engagement**.

GOALS



- To serve as the **locus** of University based economic development initiatives for Youngstown and the Mahoning Valley.
- Maintain, expand and diversify **funding streams**.
- Provide contractual **grant writing** services to seek funding for campus/community economic development initiatives and campus/community land use planning.
- To enhance connections between University departments and community stakeholders, to increase **faculty** and **students** engagement opportunities in our community.
- To grand marshal existing economic and community development agencies working on tackling existing issues in a collaborative fashion that directly support University goals and mission.

Metrics



- Tracking of number of economic development projects leading or providing support between REDI and Academic Departments.
- Tracking of number of revenue and grant sources.
- Number of grants applied for and increase of funding for campus/community economic development/land use initiatives.
- Tracking of faculty asked to engage in projects and students involved in initiatives and projects.
- Number of collaborative projects between the University and existing economic development agencies.

Technical Assistance



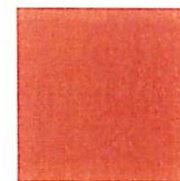
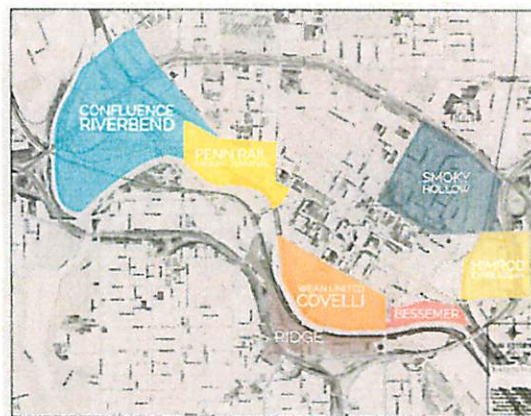
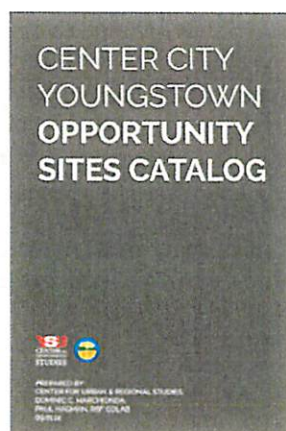
- Center for Urban and Regional Studies (CURS) will develop and maintain an economic development website cataloging and identifying economic development activity.
- CURS will provide resource support for **collaborative economic development** grant writing and **interdepartmental efforts**.
- Provide the community with data to increase the understanding of the impact of economic and community development projects on the University, City and the Region.

Outcomes

- Improved coordination of **internal** University economic development activities.
- Improved responsiveness and awareness of business and community needs in relation to economic development.
- Increased opportunities for student and faculty community engagement.
- Connect resources of the University to the greater Economic Development community and local foundations in order to align goals, missions, initiatives and funding support.



What can REDI do? ...Opportunity Sites Catalog



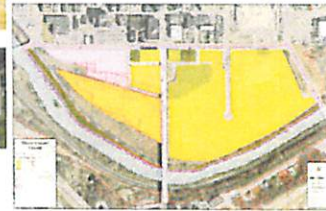
Opportunity Sites Catalog

WEAN UNITED - COVELLI CENTER Acreage : **33.81**

OWNERSHIP

DEEDED OWNER ACREAGE

KYAN DOUGLASS CORP	0.00
THE WALKER GROUP INC	0.00
GEORGE EARLE JR INC	0.00
THE WALKER GROUP	0.00
OPINION MARK GROUP	0.00
THE WALKER GROUP	0.00
WALKER GROUP HOLDINGS LLC	0.00
THE WALKER GROUP	0.00
WALKER GROUP HOLDINGS LLC	0.00



Corridor Inventory and Action Planning

South Avenue Corridor



Action Plan
Surveyed: November 2014

